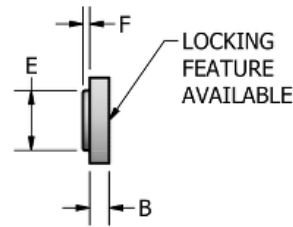
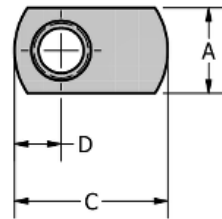


# Spot Weld Nut - Single Tab



DISTRIBUTED BY

**ADVANCE** 

COMPONENTS

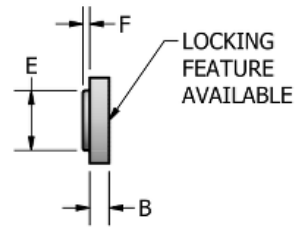
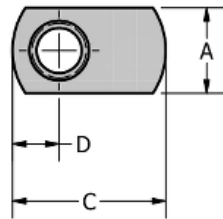
advancecomponents.com 972-446-5500

Product	Thread Size	Width (in)	Thickness (in)	Length (in)	A (in)	Tol A (in)	B (in)	Tol B (in)	C (in)	Tol C (in)	D (in)	Tol D (in)	E (in)	Tol E (in)	F (in)	Hole In Sheet (in)
SN 1109	#6-32	7/16	3/32	5/8	0.438	+0.015 -0.005	0.094	+0.003 -0.003	0.625	+0.015 -0.015	0.187	+0.015 -0.015	0.188	+0.010 -0.010	0.030	0.203
SN 1409	#8-32	7/16	3/32	5/8	0.438	+0.015 -0.005	0.094	+0.003 -0.003	0.625	+0.015 -0.015	0.187	+0.015 -0.015	0.203	+0.010 -0.010	0.030	0.219
SN 1510	#10-24	7/16	3/32	5/8	0.438	+0.015 -0.005	0.094	+0.003 -0.003	0.625	+0.015 -0.015	0.187	+0.015 -0.015	0.234	+0.010 -0.010	0.030	0.250
SN 1710	#10-32	7/16	3/32	5/8	0.438	+0.015 -0.005	0.094	+0.003 -0.003	0.625	+0.015 -0.015	0.187	+0.015 -0.015	0.234	+0.010 -0.010	0.030	0.250
SN 2113	1/4-20	1/2	1/8	13/16	0.500	+0.020 -0.005	0.125	+0.003 -0.003	0.813	+0.014 -0.016	0.250	+0.015 -0.015	0.297	+0.010 -0.010	0.050	0.312
SN 2113L	1/4-20	1/2	1/8	13/16	0.500	+0.020 -0.005	0.125	+0.003 -0.003	0.813	+0.014 -0.016	0.250	+0.015 -0.015	0.297	+0.010 -0.010	0.050	0.312
SN 2213	1/4-28	1/2	1/8	13/16	0.500	+0.020 -0.005	0.125	+0.003 -0.003	0.813	+0.014 -0.016	0.250	+0.015 -0.015	0.297	+0.010 -0.010	0.050	0.312
SN 2716	5/16-18	5/8	9/64	63/64	0.625	+0.030 -0.005	0.141	+0.004 -0.002	0.984	+0.015 -0.015	0.281	+0.015 -0.015	0.359	+0.010 -0.010	0.080	0.375
SN 2816	5/16-24	5/8	9/64	63/64	0.625	+0.030 -0.005	0.141	+0.004 -0.002	0.984	+0.015 -0.015	0.281	+0.015 -0.015	0.359	+0.010 -0.010	0.080	0.375
SN 3318	3/8-16	5/8	9/64	1 1/8	0.625	+0.030 -0.005	0.141	+0.004 -0.002	1.125	+0.015 -0.015	0.344	+0.015 -0.015	0.438	+0.010 -0.010	0.090	0.453
SN 3418	3/8-24	5/8	9/64	1 1/8	0.625	+0.030 -0.005	0.141	+0.004 -0.002	1.125	+0.015 -0.015	0.344	+0.015 -0.015	0.438	+0.010 -0.010	0.090	0.453

**Material:** C1010 High-Welding Quality, Low Carbon Steel  
**Finish:** Plain, Unless Specified

**Threads:** Unified Standard Class 2B ASME B 1.1-2003

# Spot Weld Nut - Single Tab



DISTRIBUTED BY

**ADVANCE** 

COMPONENTS

advancecomponents.com 972-446-5500

Product	Thread Size	Width (mm)	Thickness (mm)	Length (mm)	A (mm)	Tol A (mm)	B (mm)	Tol B (mm)	C (mm)	Tol C (mm)	D (mm)	Tol D (mm)	E (mm)	Tol E (mm)	F (mm)	Tol F (mm)	Hole In Sheet (mm)
SNM 03516	M3.5 X 0.6-6H	11.00	2.4	16.00	11.00	+0.3 -0.2	2.40	+0.1 -0.1	16.00	+0.4 -0.4	4.800	+0.4 -0.4	4.80	+0.2 -0.3	0.80	+0.3 -0.1	5.2
SNM 04016	M4 X 0.7-6H	11.00	2.4	16.00	11.00	+0.3 -0.2	2.40	+0.1 -0.1	16.00	+0.4 -0.4	4.800	+0.4 -0.4	5.20	+0.2 -0.3	0.80	+0.3 -0.1	5.6
SNM 05016	M5 X 0.8-6H	11.00	2.4	16.00	11.00	+0.3 -0.2	2.40	+0.1 -0.1	16.00	+0.4 -0.4	4.800	+0.4 -0.4	6.00	+0.2 -0.3	0.80	+0.3 -0.1	6.4
SNM 06020	M6 X 1.0-6H	13.00	3.2	20.50	13.00	+0.4 -0.3	3.20	+0.1 -0.1	20.50	+0.4 -0.4	6.400	+0.4 -0.4	7.60	+0.2 -0.3	1.20	+0.3 -0.1	8.0
SNM 06020L	M6 X 1.0-6H	13.00	3.2	20.50	13.00	+0.4 -0.3	3.20	+0.1 -0.1	20.50	+0.4 -0.4	6.400	+0.4 -0.4	7.60	+0.2 -0.3	1.20	+0.3 -0.1	8.0
SNM 08025	M8 X 1.25-6H	16.00	3.6	25.00	16.00	+0.4 -0.3	3.60	+0.1 -0.1	25.00	+0.4 -0.4	7.100	+0.4 -0.4	9.20	+0.2 -0.3	2.00	+0.3 -0.1	9.6
SNM 10028	M10 X 1.5-6H	16.00	3.6	28.00	16.00	+0.4 -0.3	3.60	+0.1 -0.1	28.50	+0.4 -0.4	8.700	+0.4 -0.4	11.80	+0.2 -0.3	2.40	+0.3 -0.1	12.2

**Material:** C1010 High-Welding Quality, Low Carbon Steel

**Finish:** Plain, Unless Specified

**Threads:** ASME B 1.13M-2005